

# ARCHITECTURAL DRAFTING + PLANNING



Kramer-Correia Construction

# COURSE OUTLINE

## LESSON 1

The role of  
architects in  
sustainable design

## LESSON 3

Environmental  
considerations in  
architectural planning

## LESSON 5

Case studies:  
sustainable  
architectural designs

## LESSON 2

Principles of  
efficient design

## LESSON 4

Technological  
advancements in  
architectural drafting

# LESSON ONE

## THE ROLE OF ARCHITECTS IN SUSTAINABLE DESIGN



Definition of architectural drafting and planning



Exploring the responsibilities and challenges architects face



The impact of architectural decisions on energy efficiency and resource conservation



# LESSON ONE

- Architectural drafting and planning refer to the processes involved in creating detailed drawings, diagrams, and plans for the design, construction, and development of buildings and structures.
- Architects bear significant responsibilities in the design and construction of buildings.
- By incorporating sustainable design principles, architects can minimize the environmental impact of structures and promote efficient resource utilization.





# LESSON TWO

## THE PRINCIPLES OF EFFICIENT DESIGN

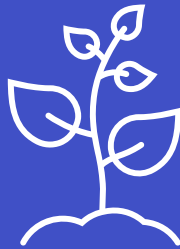
Space planning

Functional layouts

ARCHITECTURAL DRAFTING AND PLANNING

# LESSON THREE

## ENVIRONMENTAL CONSIDERATIONS



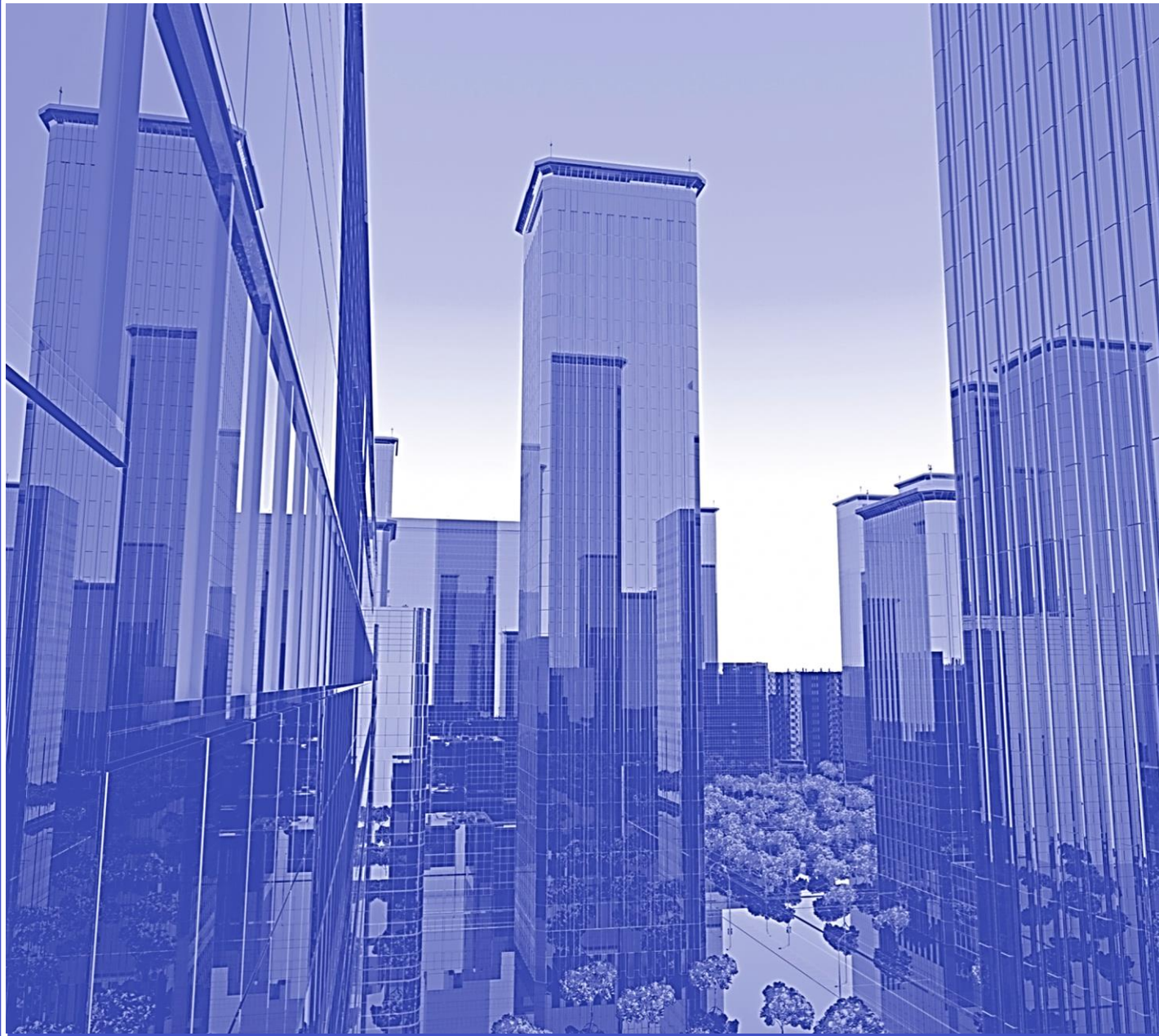
Architects play a crucial role in implementing these practices to reduce the environmental impact of buildings.



Green building practices involve the integration of sustainable design strategies and the use of environmentally friendly materials throughout the entire architectural process.



Water conservation strategies can include the incorporation of efficient plumbing, rainwater collection, and landscape designs that require minimal irrigation.



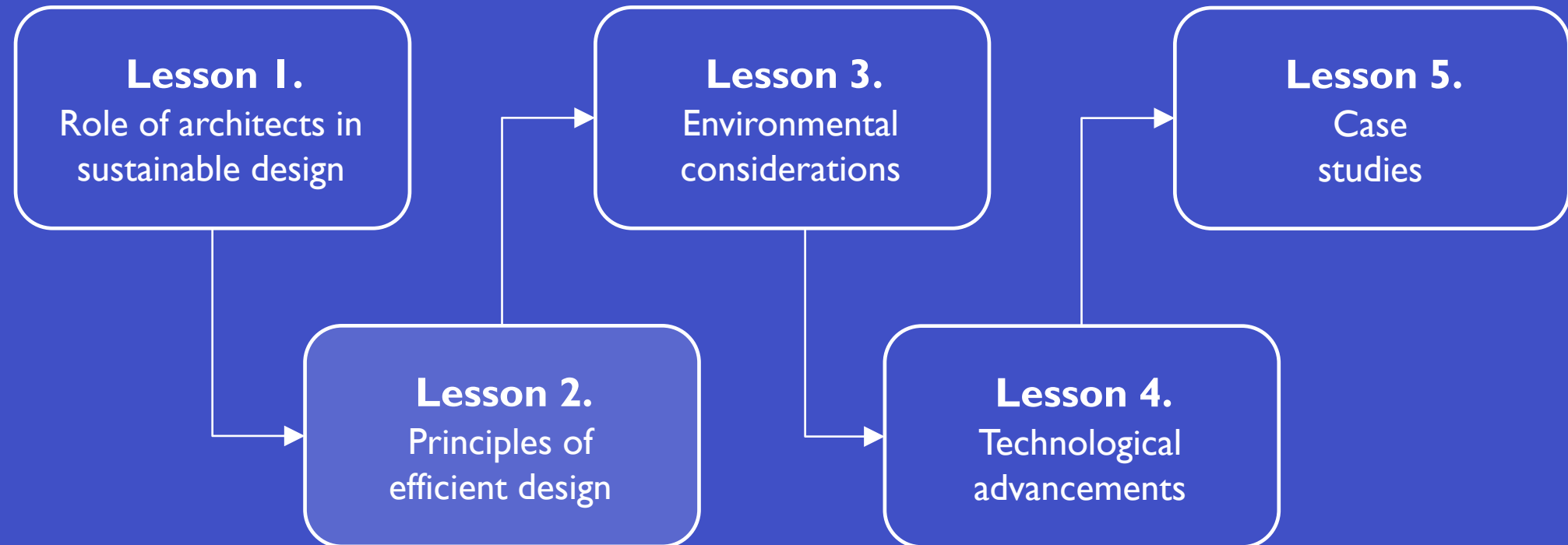
# LESSON ONE SUMMARY

Significance of sustainable design in today's world

Exploring the responsibilities and challenges architects face

The impact of architectural decisions on energy efficiency and resource conservation

# COURSE PROGRESS





# COURSE OVERVIEW



Architects must navigate a multitude of challenges throughout the design process, like understanding client requirements, incorporating sustainable design principles, and collaborating with various stakeholders.



Balancing creativity with practicality and addressing the diverse needs of clients and users are constant challenges that architects must tackle to deliver successful architectural solutions.



By examining the importance of efficient design, environmental considerations, and technological advancements, we can understand how architects play a pivotal role in shaping the future of our built environment.



Architectural drafting involves creating precise and accurate two-dimensional (2D) or three-dimensional (3D) representations of architectural designs, while architectural planning encompasses the strategic considerations, spatial organization, and functional layout of a structure, taking into account factors such as aesthetics, building codes, safety regulations, and sustainability.



# JOIN US NEXT MONTH

Join us next month as we uncover more key elements of architectural drafting and planning that contribute to the creation of sustainable, functional, and aesthetically pleasing structures.



Kramer-Correia Construction

# THANK YOU